



LYDIA KROESE
INTERIOR DESIGNER

PORTF

DESIGN WHAT IS KIND

Let's consider the humans for whom we design.

"Kind" design is empathetic, perceptive, vibrant, and research-based.

Perceiving needs and space from the user's perspective, designing lively spaces that use color to energize.

Imaginative use of form and materials, creating evocative and vibrant environments.

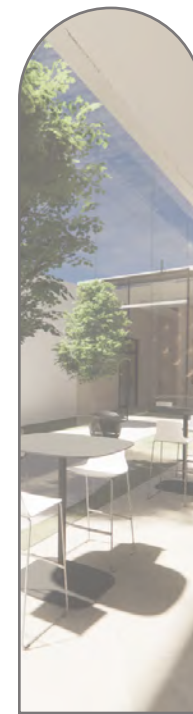
Prioritizing light to support wellness.

Translating carefully researched concepts into visual and spatial themes.

Orchestrating rhythm and variety through layered patterns and textures,

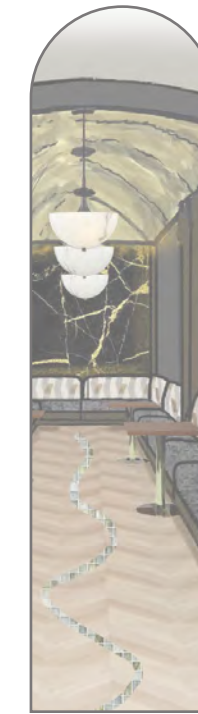
and curating finishes for moments of impact and background support.

contents



1

healthcare



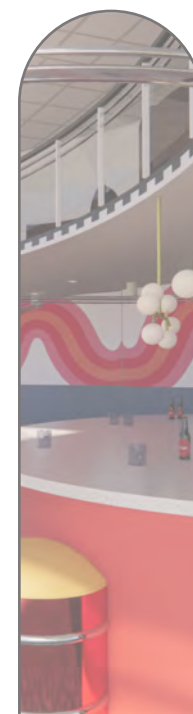
2

hospitality



3

hospitality



4

hospitality



5

education



6

rendering

in partnership with Emily Horn

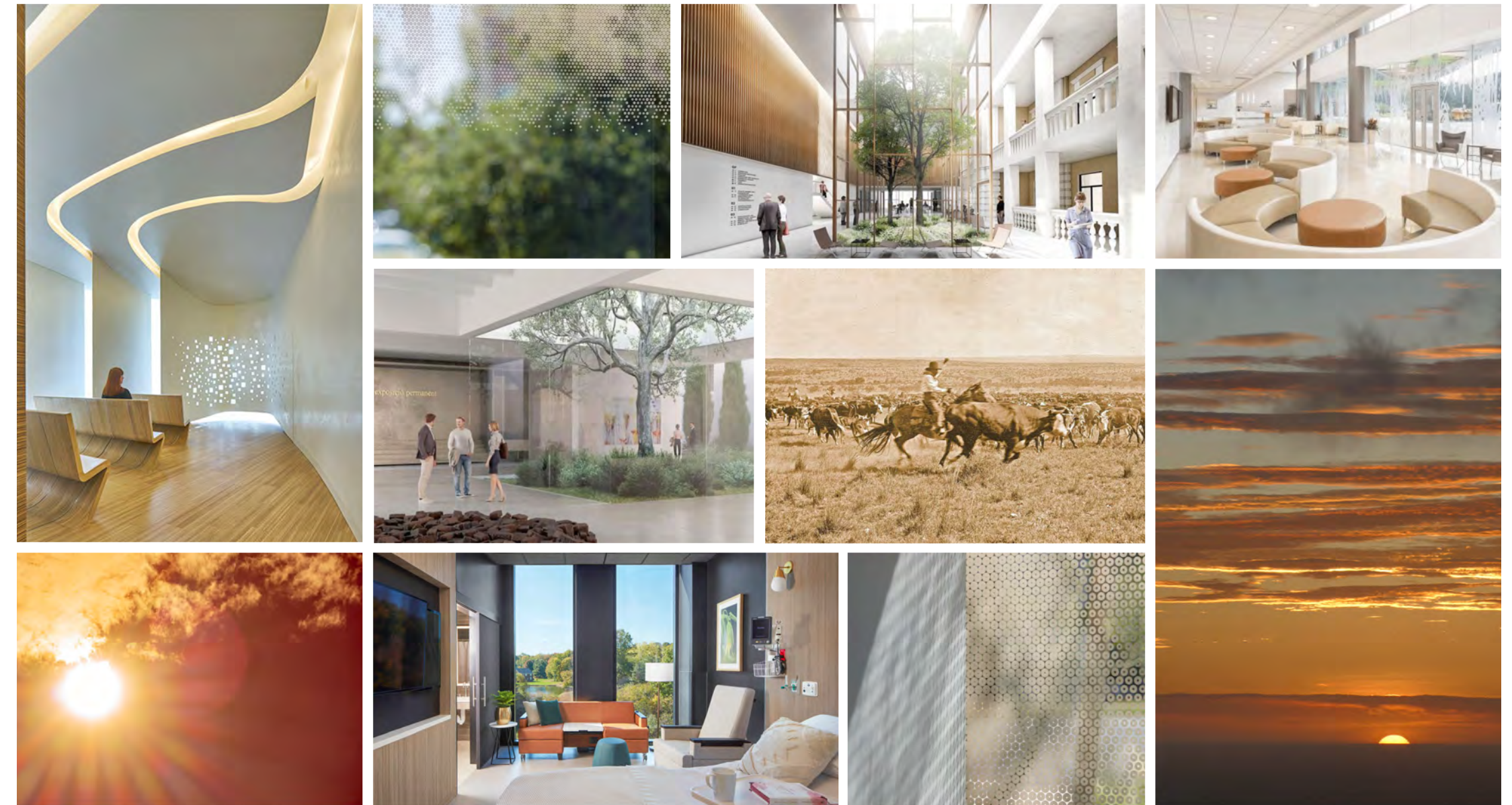
healthcare simulation center

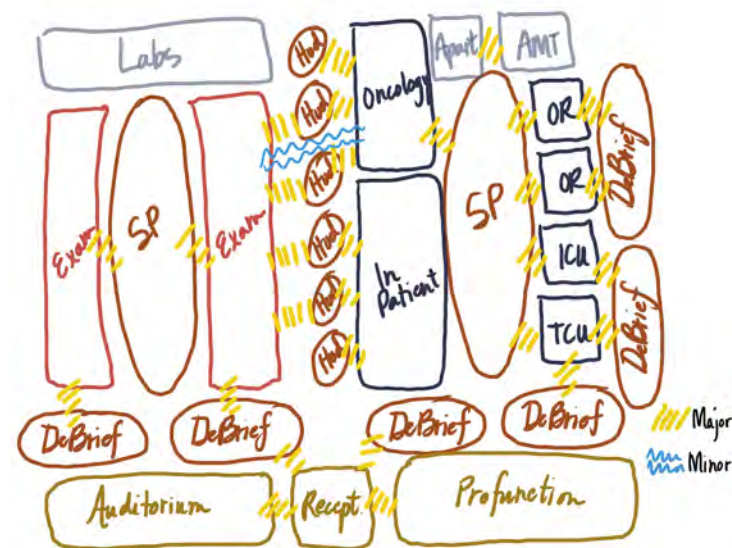
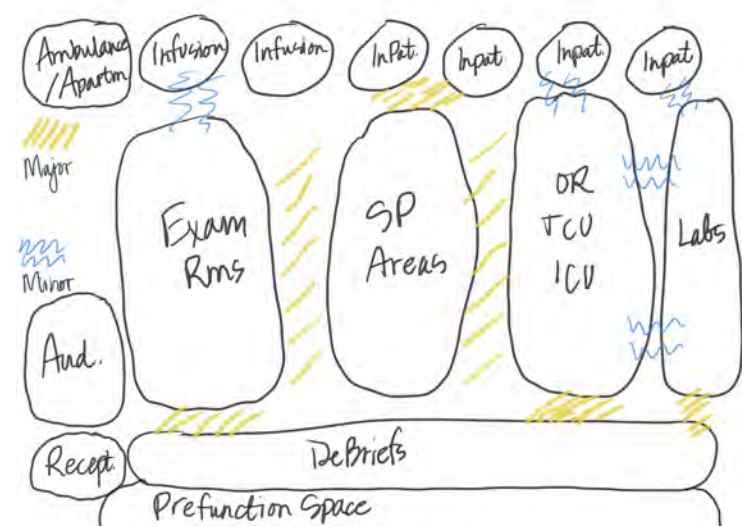
1



SUFFUSED FRONTIERS

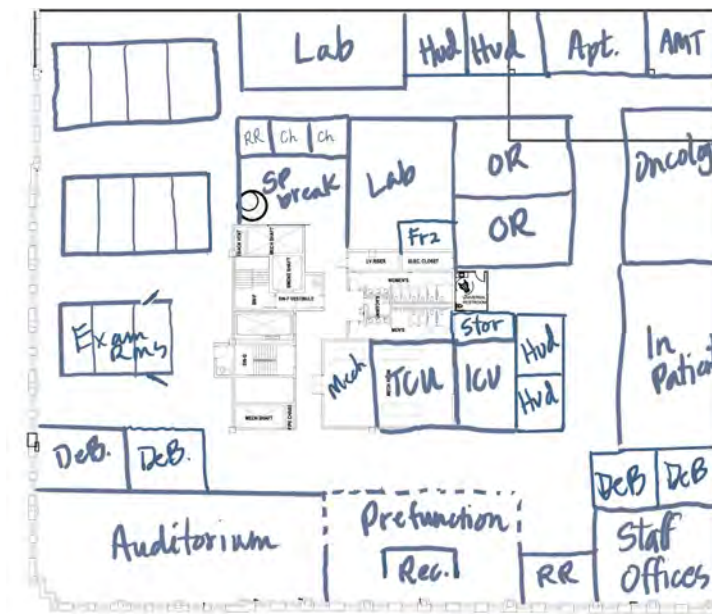
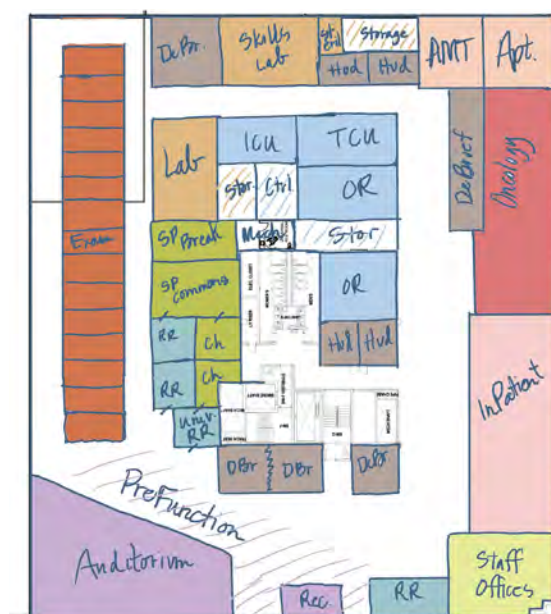
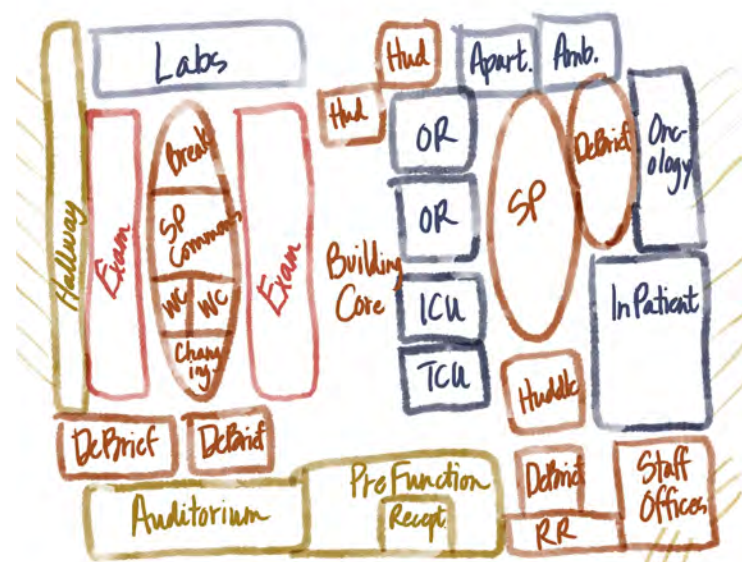
Transformative research and compassionate care at MD Anderson are forging new frontiers, perfecting medical practice and cancelling cancer. The oncology medical simulation center utilizes outdoor transparencies, glazed courtyard access, and intuitive wayfinding warmed by landscapes and colors of the Texas sunset to impart tranquility and hope on the passage toward healing.





Process Work

Finishes



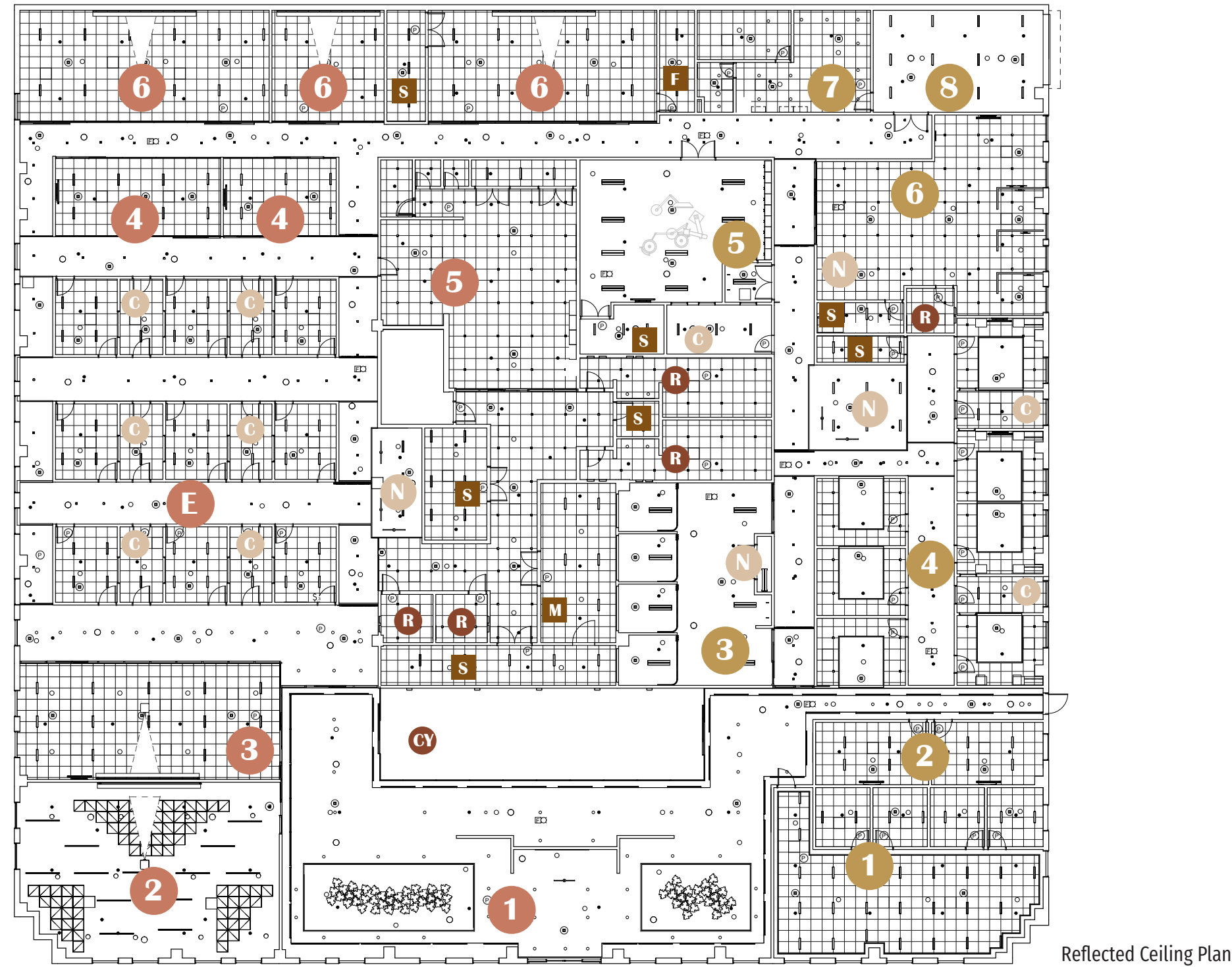


- | | | | | |
|--------------------------------|----------------------------------------------|-----------------------|------------------------------|------------------------------|
| 1 Reception/Prefunction | 5 Standardized Patient Prep and Break | R Restroom | 1 Offices | 5 Operating Room |
| 2 Auditorium | 6 Laboratory | CY Courtyard | 2 Huddle Rooms | 6 Oncology Unit |
| 3 Lecture Hall/Debrief | E Exam Rooms | C Control Room | 3 Intensive Care Unit | 7 Simulated Apartment |
| 4 Debrief | | S Storage | 4 In-Patient Rooms | 8 Ambulance Bay |
| | | M Mechanical | | |
| | | F Freezer | | |

Floor Plan



1 Reception and Waiting Area



Reflected Ceiling Plan

- | | | | | |
|--------------------------------|----------------------------------------------|-----------------------|------------------------------|------------------------------|
| 1 Reception/Prefunction | 5 Standardized Patient Prep and Break | R Restroom | 1 Offices | 5 Operating Room |
| 2 Auditorium | 6 Laboratory | CY Courtyard | 2 Huddle Rooms | 6 Oncology Unit |
| 3 Lecture Hall/Debrief | E Exam Rooms | C Control Room | 3 Intensive Care Unit | 7 Simulated Apartment |
| 4 Debrief | | S Storage | 4 In-Patient Rooms | 8 Ambulance Bay |
| | | M Mechanical | | |
| | | F Freezer | | |



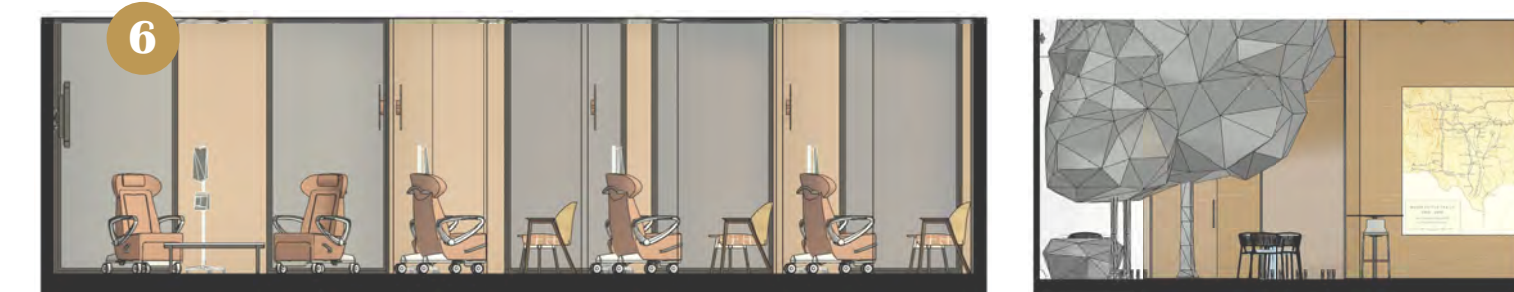
RECEPTION AREA



SP BREAKROOM & EXAM ROOM



OR & ONCOLOGY WAITING AREA



ONCOLOGY BAYS & ATRIUM

Elevations



3 Lecture and Debriefing

INSPIRED BY: Hospitality-influenced design

SHOWCASES: Daylighting strategies with expansive glass curtain walls and an accessible enclosed courtyard.

SUPPORTS: Medical education simulation training for student and continuing professional practice through medical and collaborative spaces warmed and surrounded by natural light.



6 Oncology Unit



WILD *Elegance*

Historically informed modern surroundings showcase the authentic flavors and welcome of southern Italy.



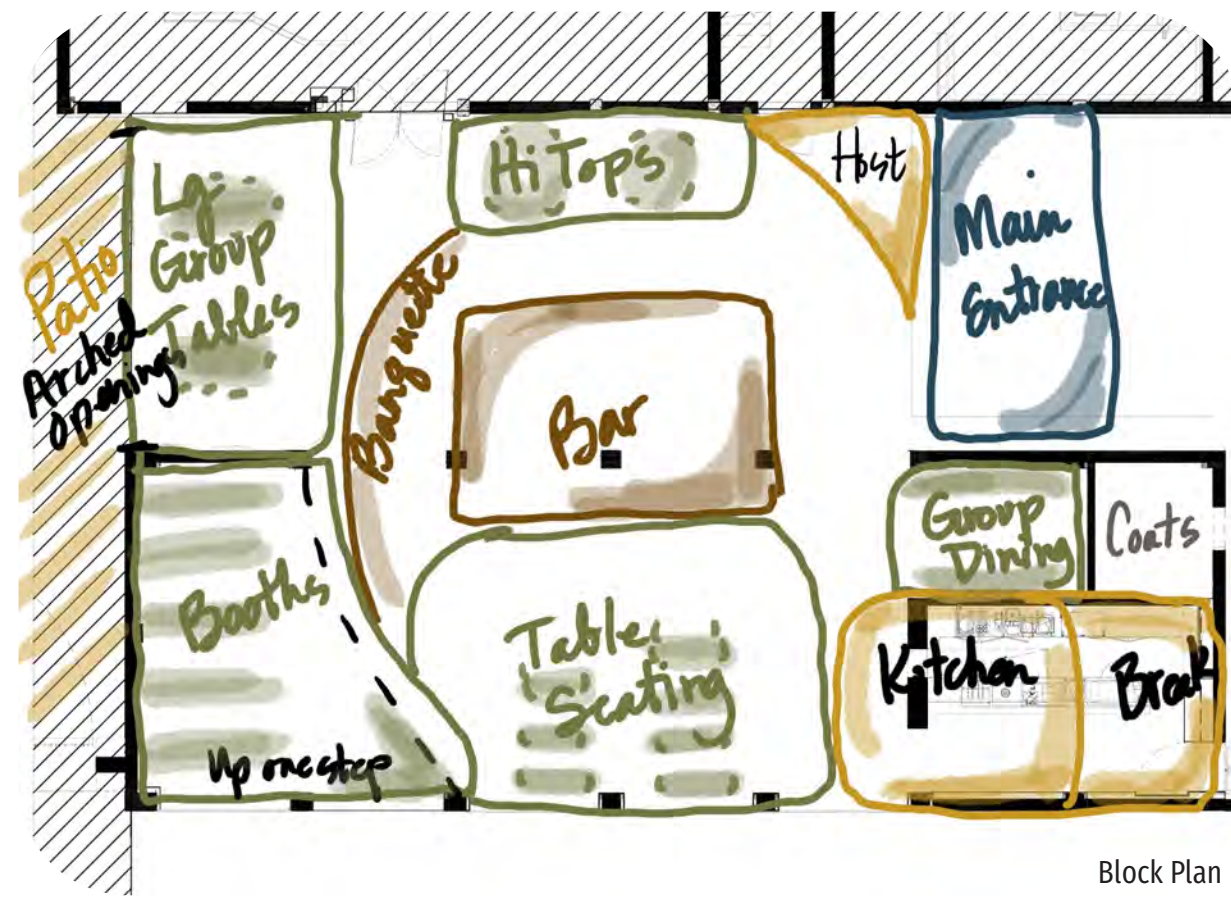
in partnership with Marissa Brittain

restaurant

2



4



ARCHITECTURAL STYLE: Mediterranean Villa

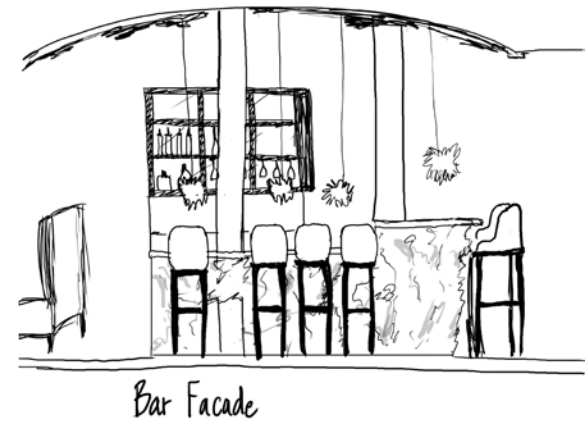
INSPIRED BY: Architecture and coastline of Italy
 SHOWCASES: Blend of historic architecture with modern design
 SUPPORTS: Extension of Monello brand to Palm Springs



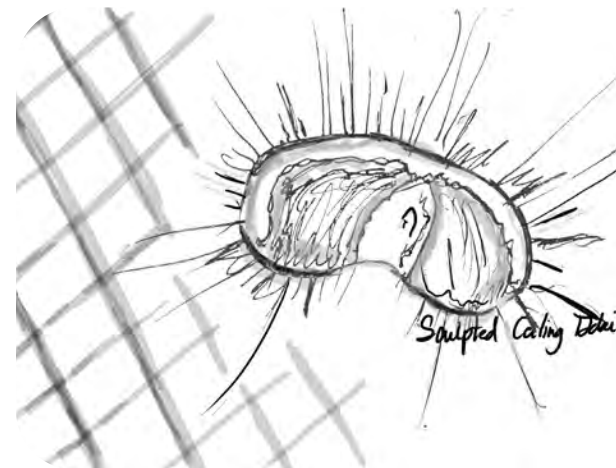
FLOOR PLAN

- 1 ENTRY
- 2 HOST STAND
- 3 BOOTHS
- 4 BAR
- 5 BANQUETTE SEATING
- 6 TABLE SEATING
- 7 KITCHEN
- 8 CONSTANTINE ROOM
- 9 GROUP DINING
- 10 PATIO

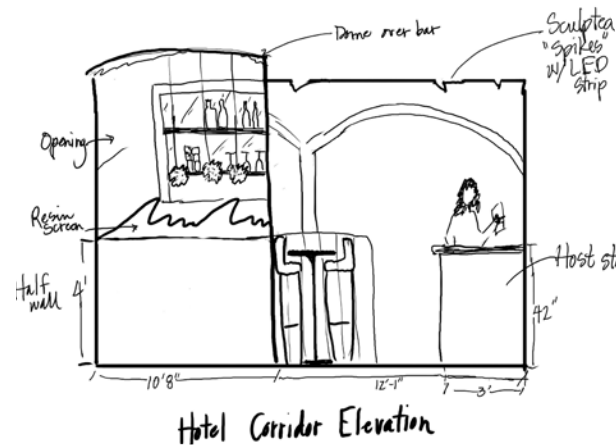
We incorporated the coffered ceilings of The Willows Historic Inn into our restaurant design. Most of the coffered ceilings in the restaurant will be painted creamy white; those over the bar will retain the original painting detail.



Bar Facade

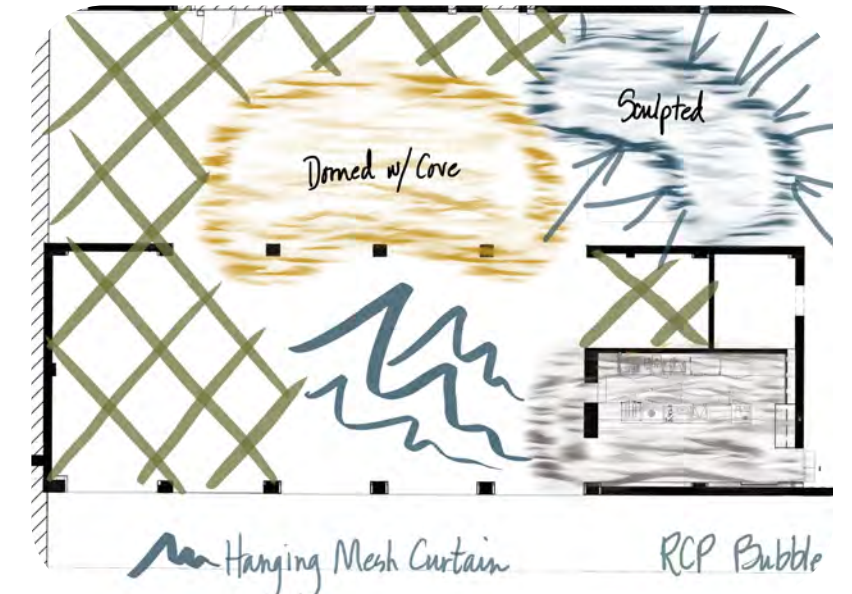
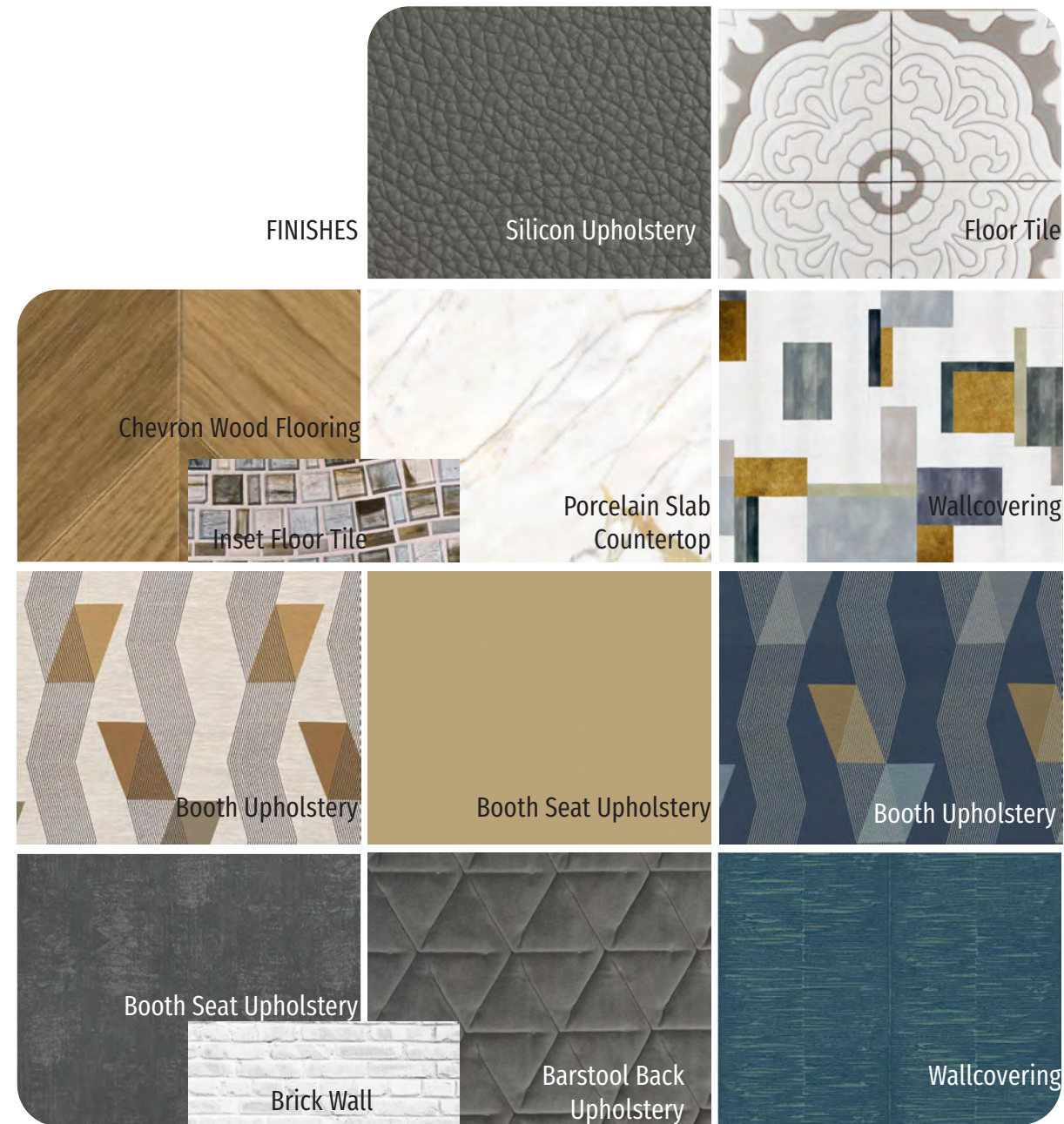


Sculpted Ceiling Detail

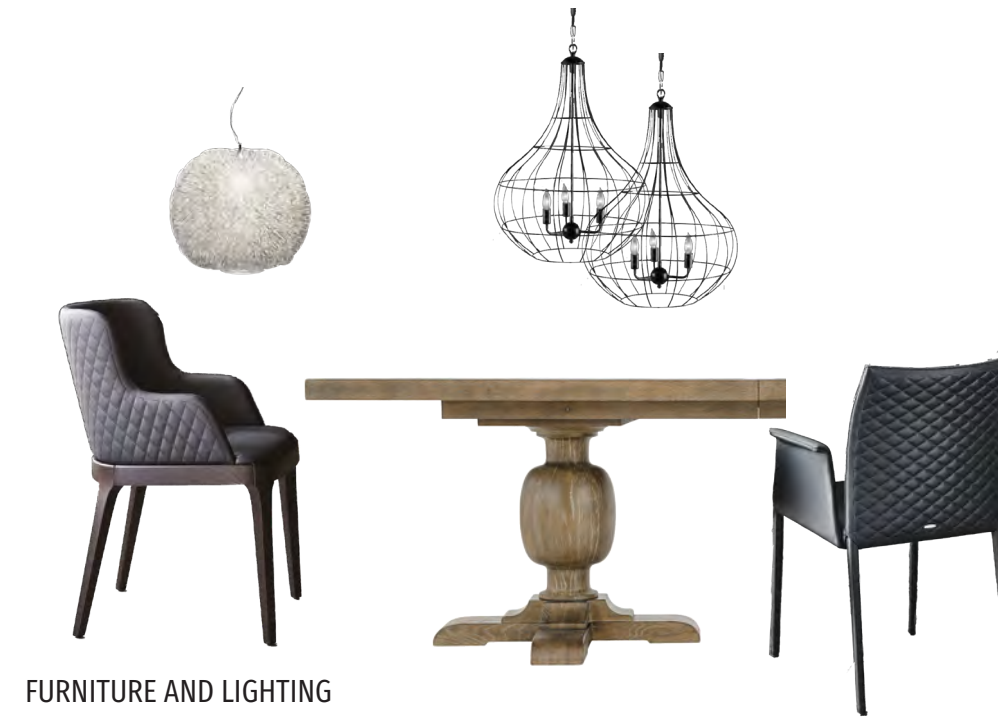


Hotel Corridor Elevation

FINISHES



Reflected Ceiling Plan Bubble Diagram



FURNITURE AND LIGHTING



Reflected Ceiling Plan

The Constantine Lounge is a reservable group lounge room immediately adjacent to the Monello bar. It features a dramatic side-lit painted Italian glass back wall, and a sculpted domed ceiling.



8 CONSTANTINE LOUNGE



9 GROUP DINING ROOM



10 OUTDOOR DINING PATIO

Directly outside the Group Dining Room area is the outdoor dining patio. It is visible and opens through a retractable glass wall inside the exterior arches.

MONELLO

Palm Springs



NORTH ELEVATION



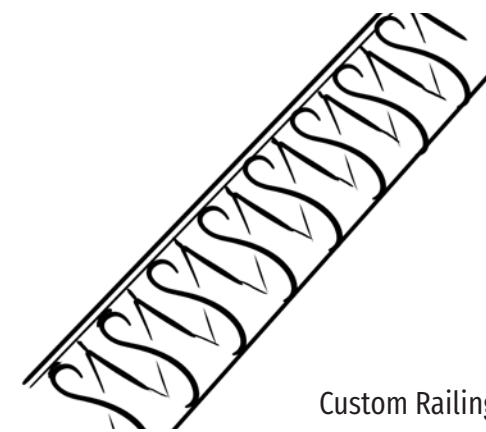
Revitalized Allure

INSPIRED BY: The historic allure of 1930s celebrity culture
SHOWCASES: Respectful update of a historically designated 1925 Mediterranean villa
SUPPORTS: A richly designed Palm Springs vacation experience

in partnership with Marissa Brittain

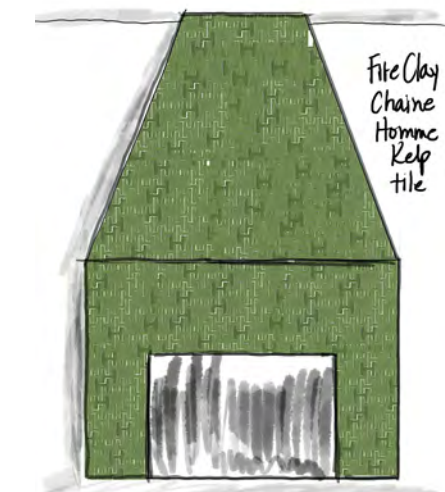
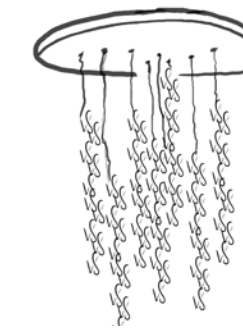
boutique hotel

3

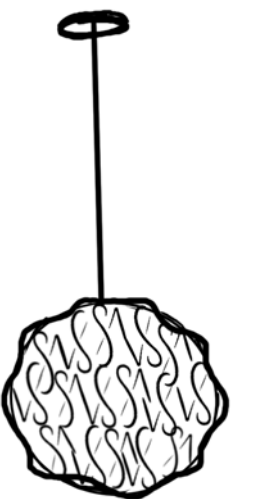


Custom Railing

Custom Light Fixture

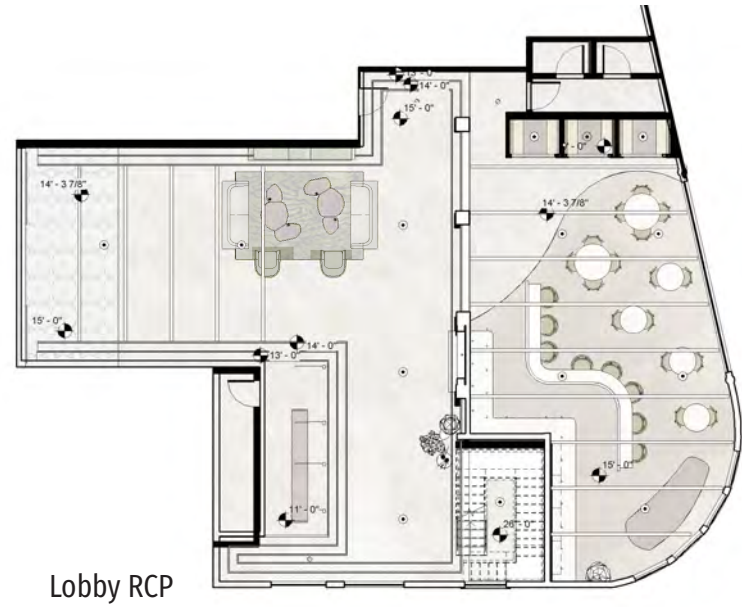


Fire Clay Chimney Home Kelp tile



Custom Light Fixture

Furniture and Finishes



Furniture and Finishes



- 1 HOTEL ENTRANCE
- 2 RECEPTION
- 3 BEVERAGE NICHE
- 4 FIREPLACE SEATING
- 5 RESTAURANT ENTRANCE
- 6 BOOTH SEATING
- 7 BREAKFAST BAR
- 8 COUNTER SEATING
- 9 TABLE SEATING

Lobby Floor Plan

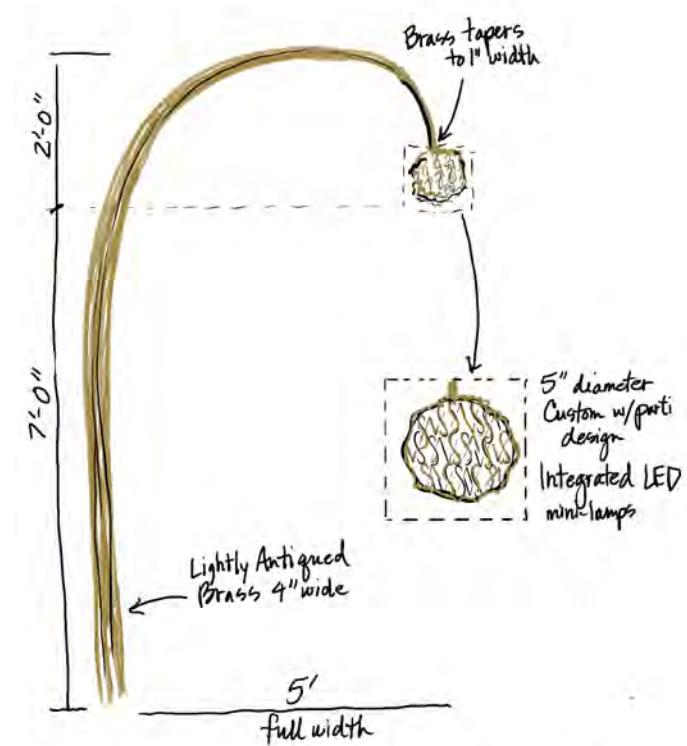
Our update brings a contemporary aesthetic to the Historic Willows Inn, while recapturing the allure of 1930s glamour. The Willows guest is seeking a historically rich vacation experience in the desert oasis of Palm Springs that is enriched by elevated design and materials.



8 Breakfast Bar and Seating

KING SUITE

DOUBLE SUITE



“WILLOW” ARCHED LAMP DETAIL



4



Floor Plan



Floor Plan



Furniture and Finishes



3



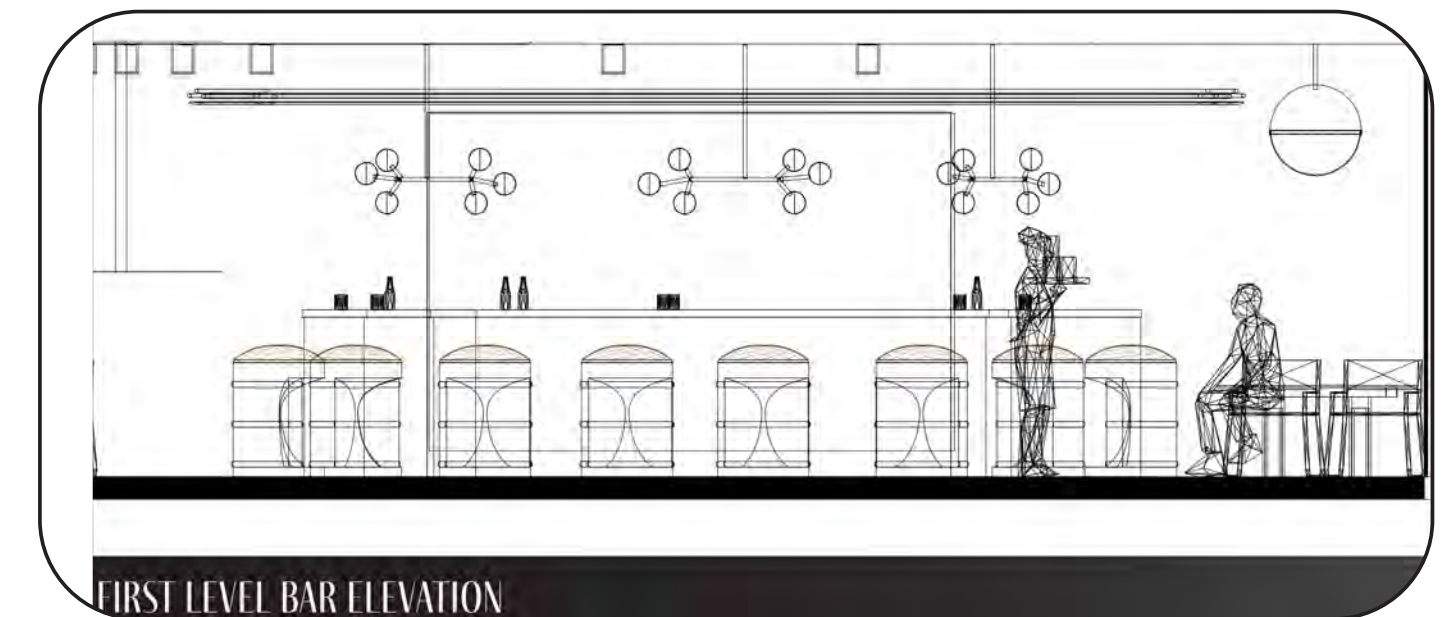
King Suite Elevation



Furniture and Finishes

DOUBLE BONUS TIME

INSPIRED BY: Pinball Nostalgia
SHOWCASES: Concept and Creativity
SUPPORTS: Respite and FUN!



TILT airport bar

4



Furniture and Finishes

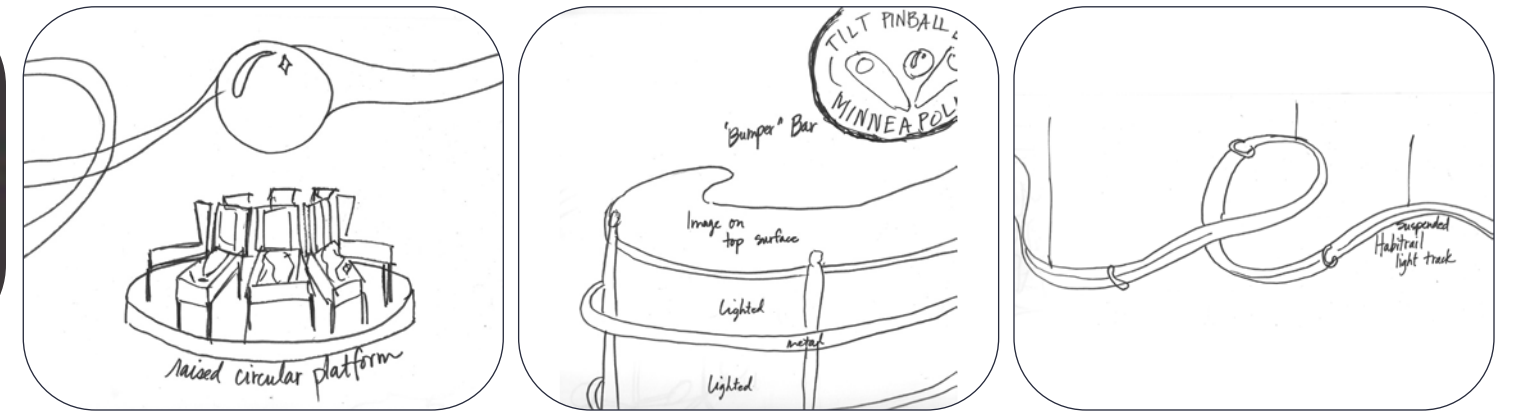


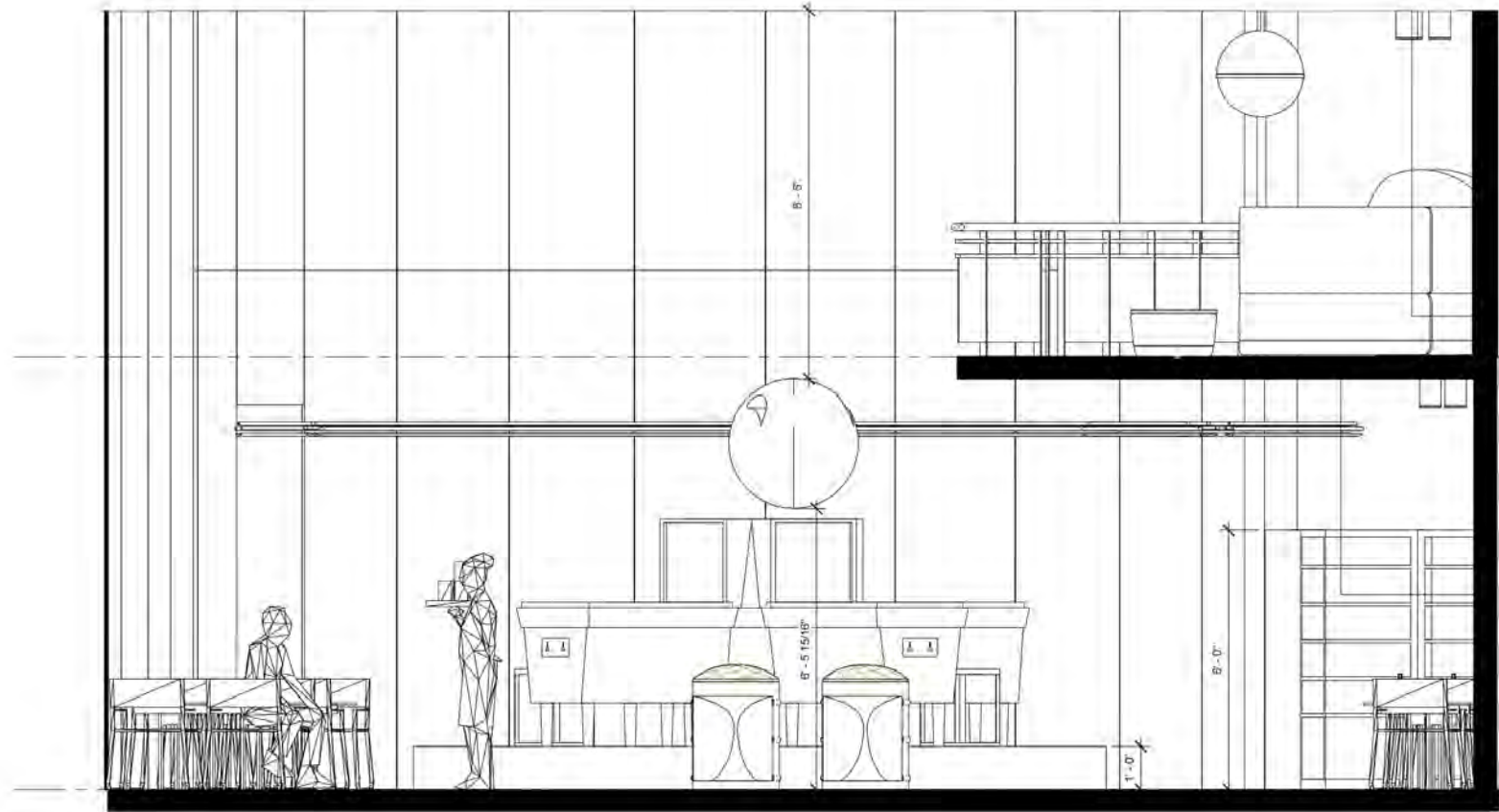
Bar, Dining Seating, Pinball Arcade



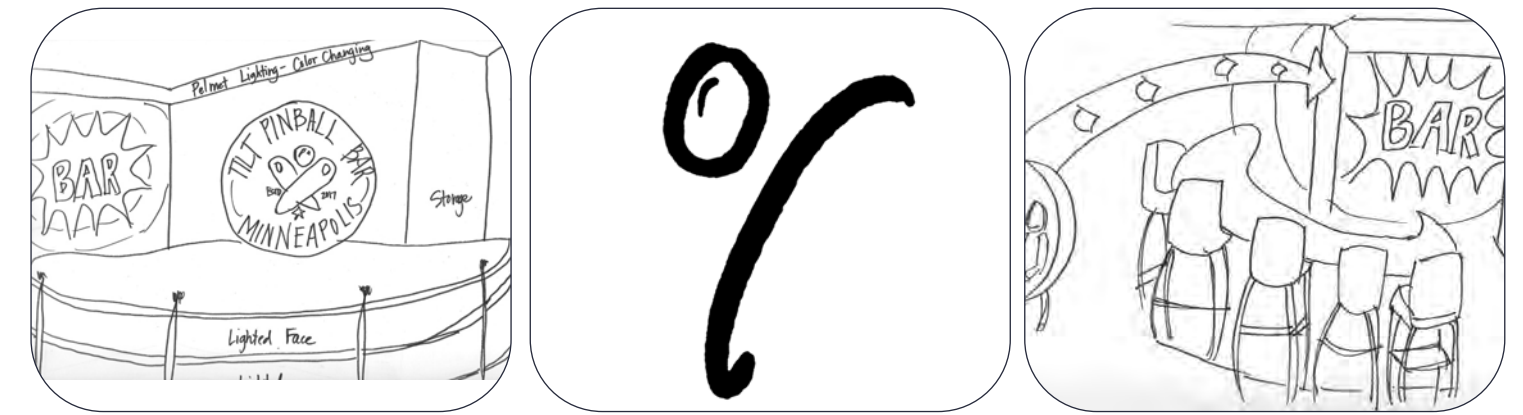
Bar and Ceiling Habitrail

Step out of the hustle into the GLOW of nostalgia: You've just been bumped into Double Bonus time at TILT @MSP.





Full Section



Restroom



Balcony Overview

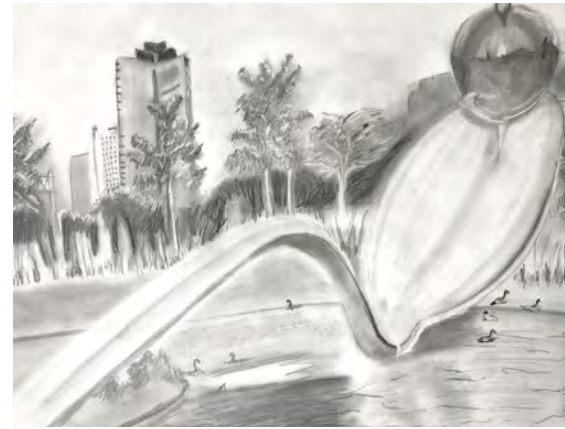
Space is the breath of art.

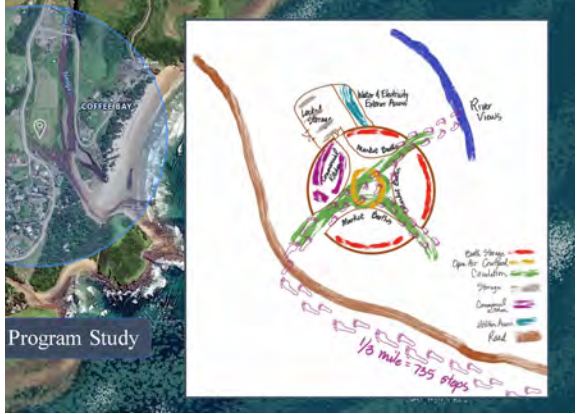
--Frank Lloyd Wright











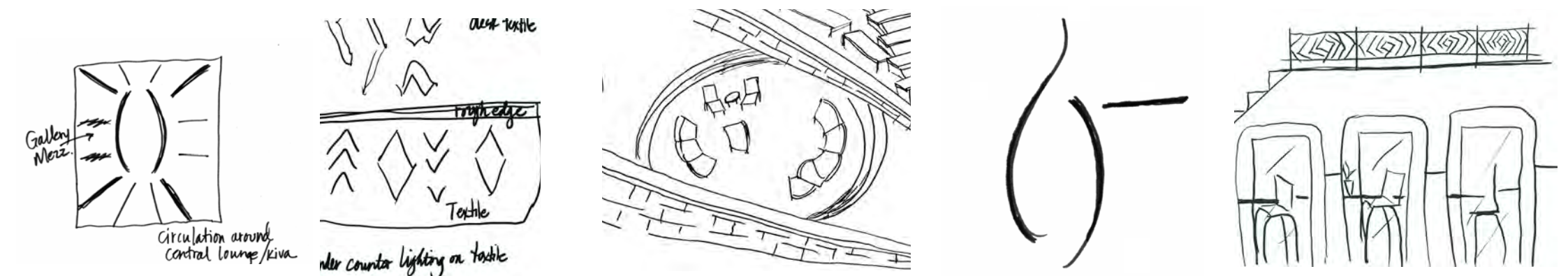
ANCESTRAL REFUGE

INSPIRED BY: Kiva, the spiritual center of Pueblo dwellings.

SUPPORTS: NAU's strategic goal of becoming the nation's leading university serving Native Americans.

SHOWCASES: rich layers of Native American ancestry through forms, stories, artifacts, and palette.

Students will recognize that the layers of their contemporary story are building on the traditions and wisdom of the ancestors.

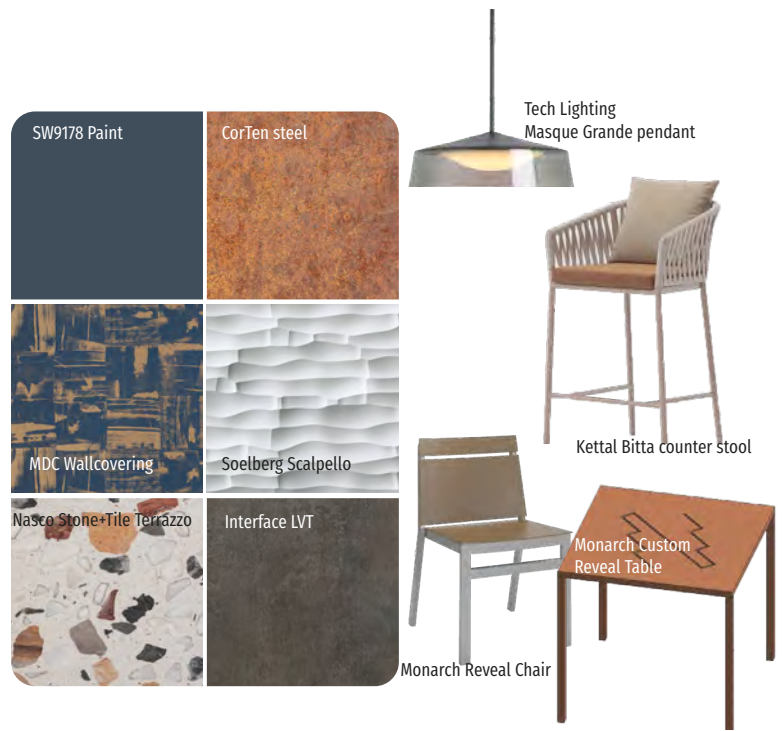


Northern Arizona University dormitory

5



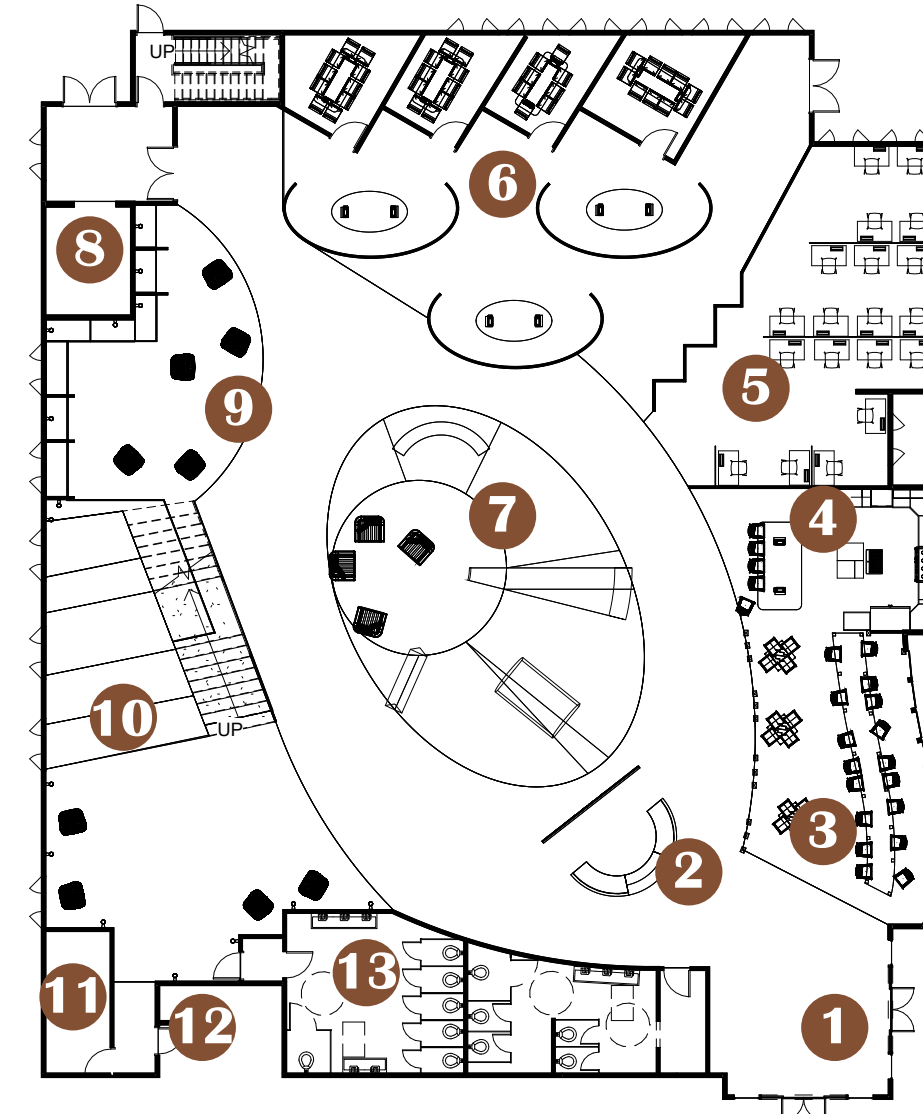
Kitchen and Work Cafe **4**



Custom reveal table design based on Pueblo embroidery pattern.

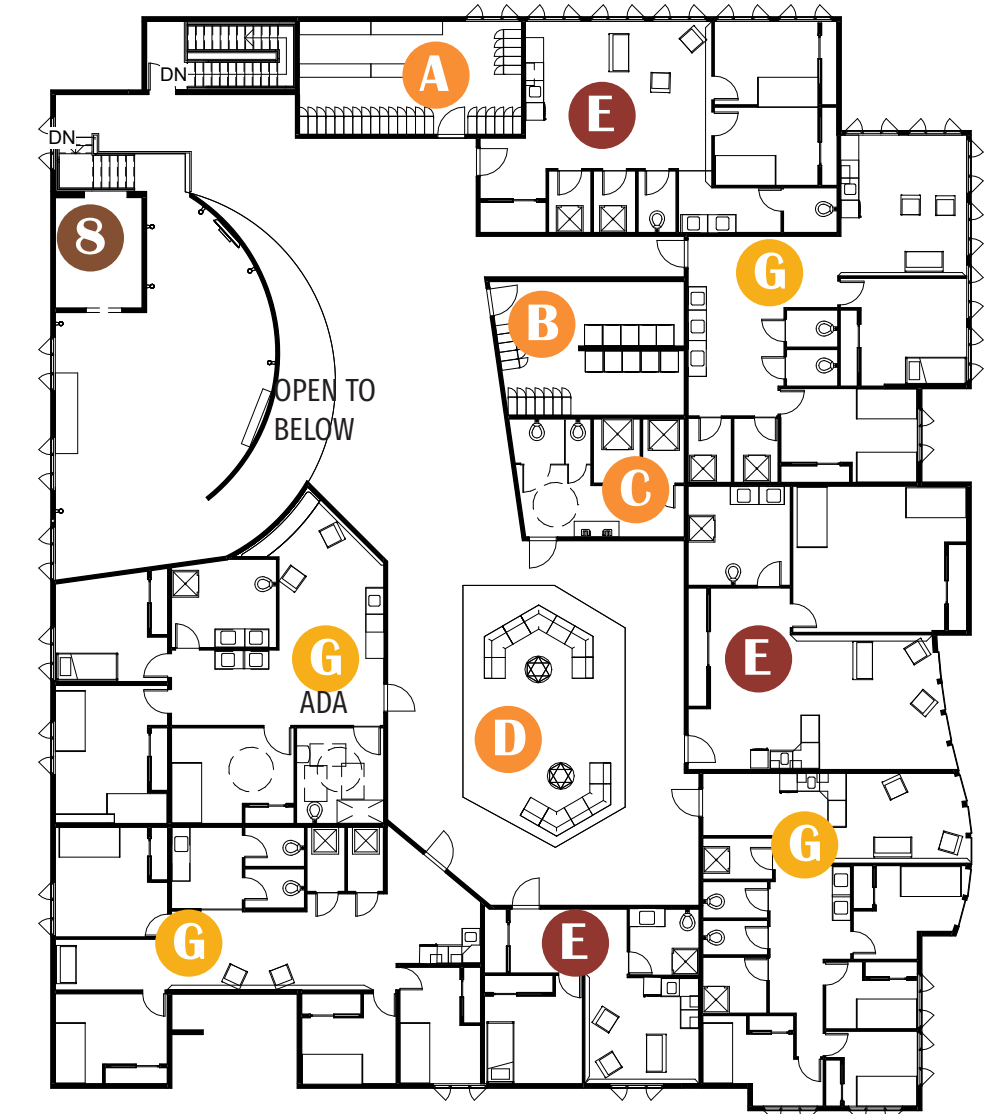


Work Cafe opposite Reception **3**



Level One

- 1** Main Entrance
- 2** Reception
- 3** Work Cafe
- 4** Kitchen
- 5** Private Study
- 6** Group Study
- 7** Lounge
- 8** Elevator
- 9** Quiet Area
- 10** Learning Stair to Mezzanine
- 11** Storage
- 12** Entrance
- 13** Public Restrooms

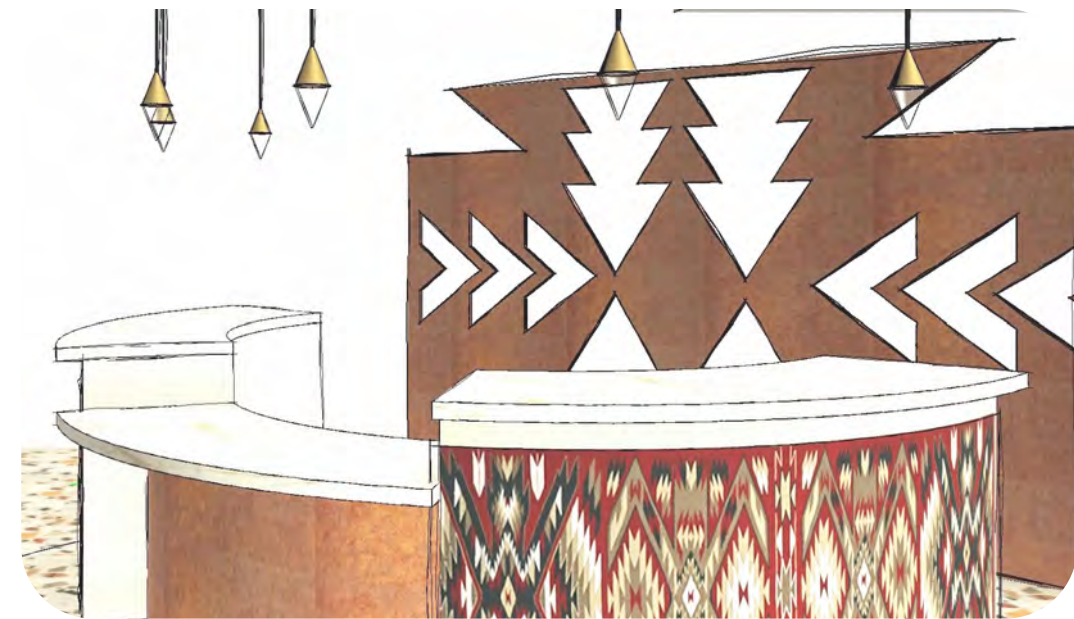


Level Two

- A** Storage
- B** Laundry
- C** Public Restroom
- D** Common Area
- E** 2-Person Suite
- G** 4-Person Suite

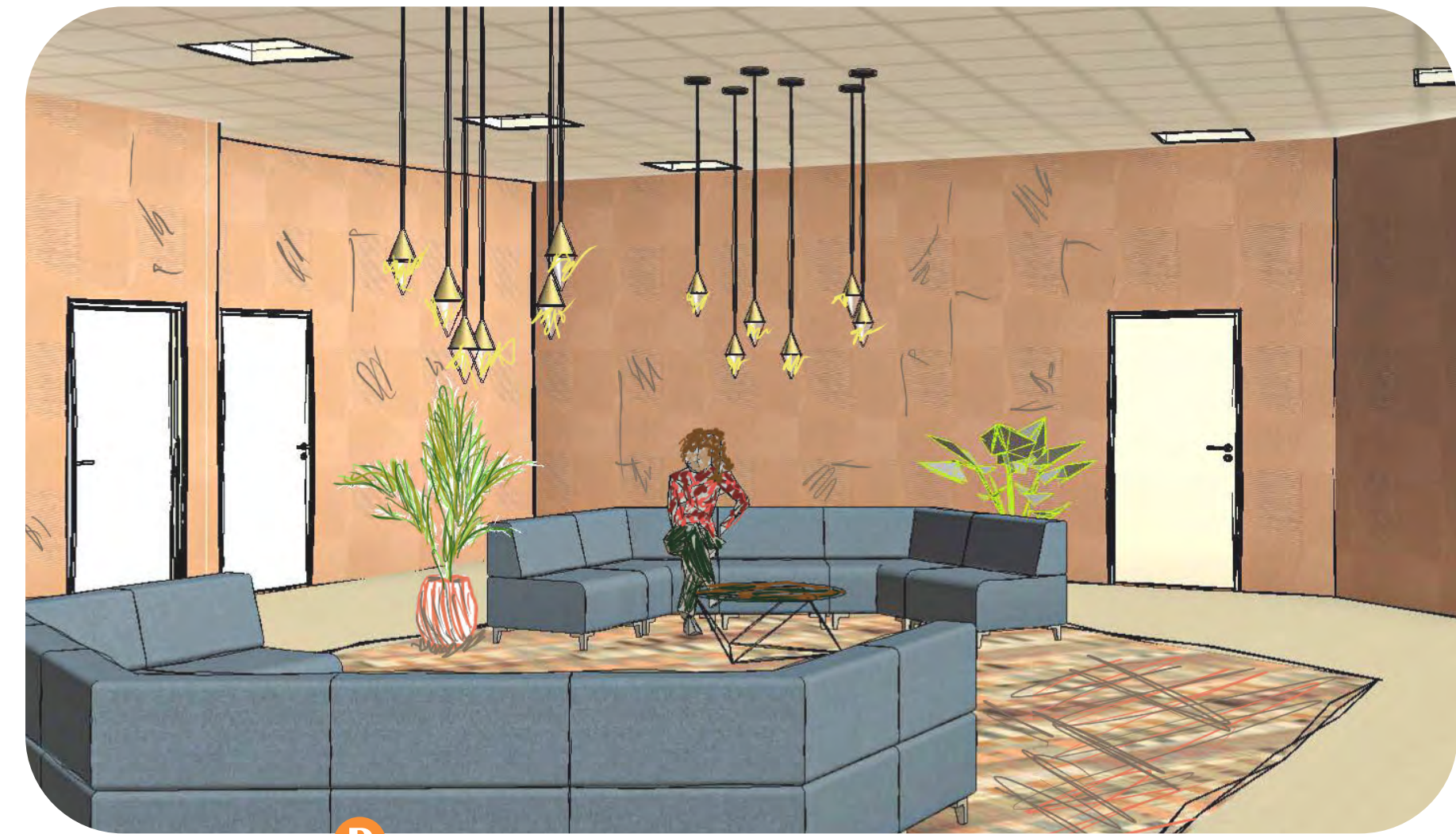


First Floor Furniture and Finishes



Custom Reception Desk 2

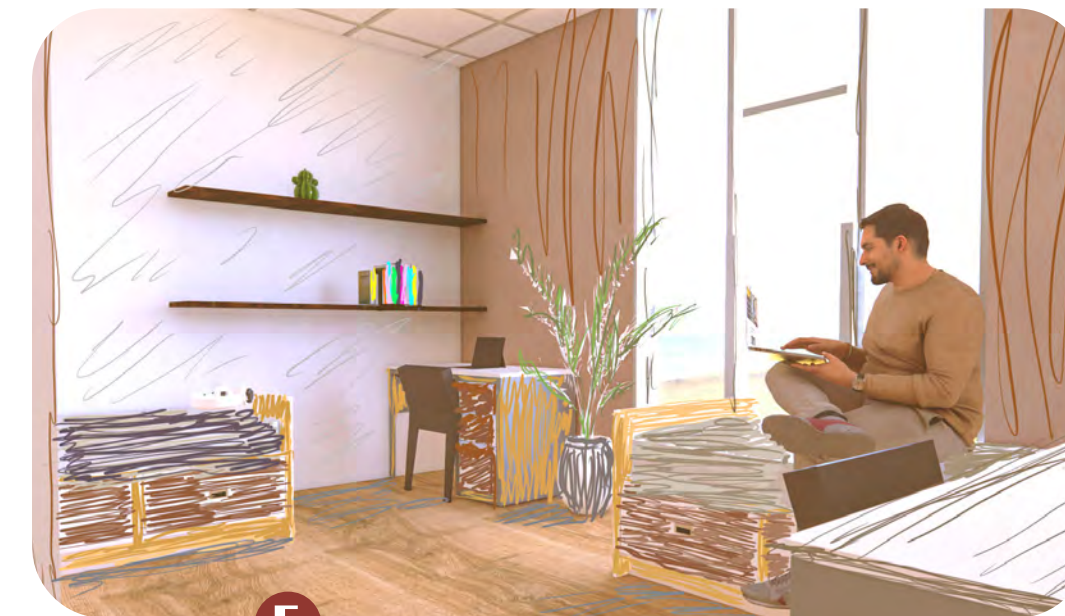
Custom reception desk designed using Navajo blanket motif, repeated in cutout pattern of CorTen wall.



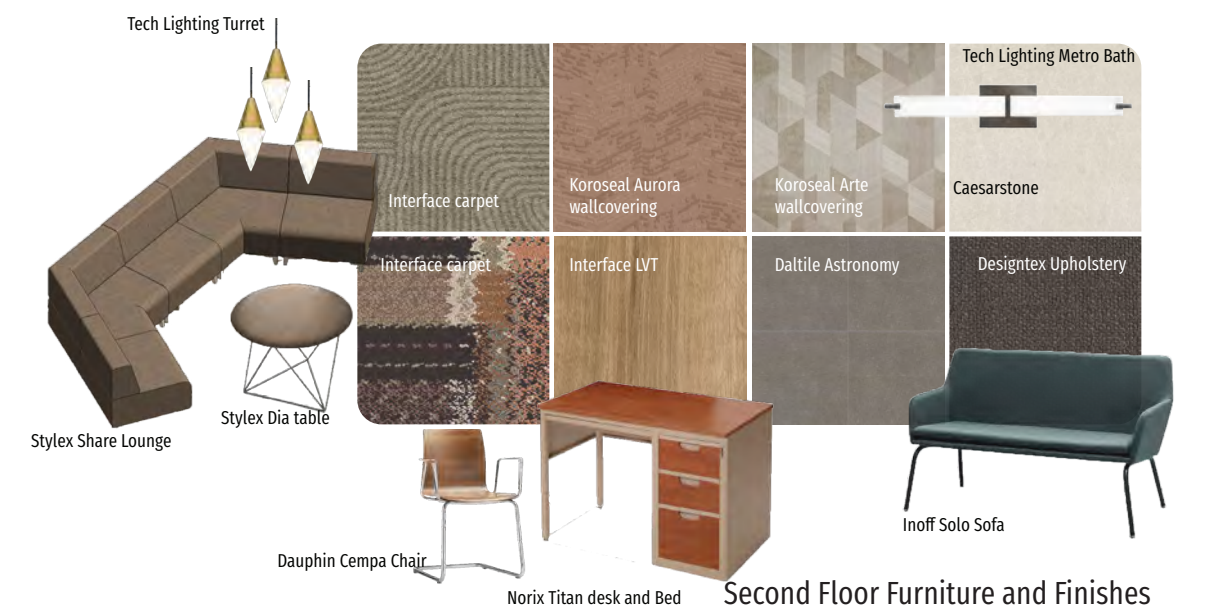
Second Floor Common Area D



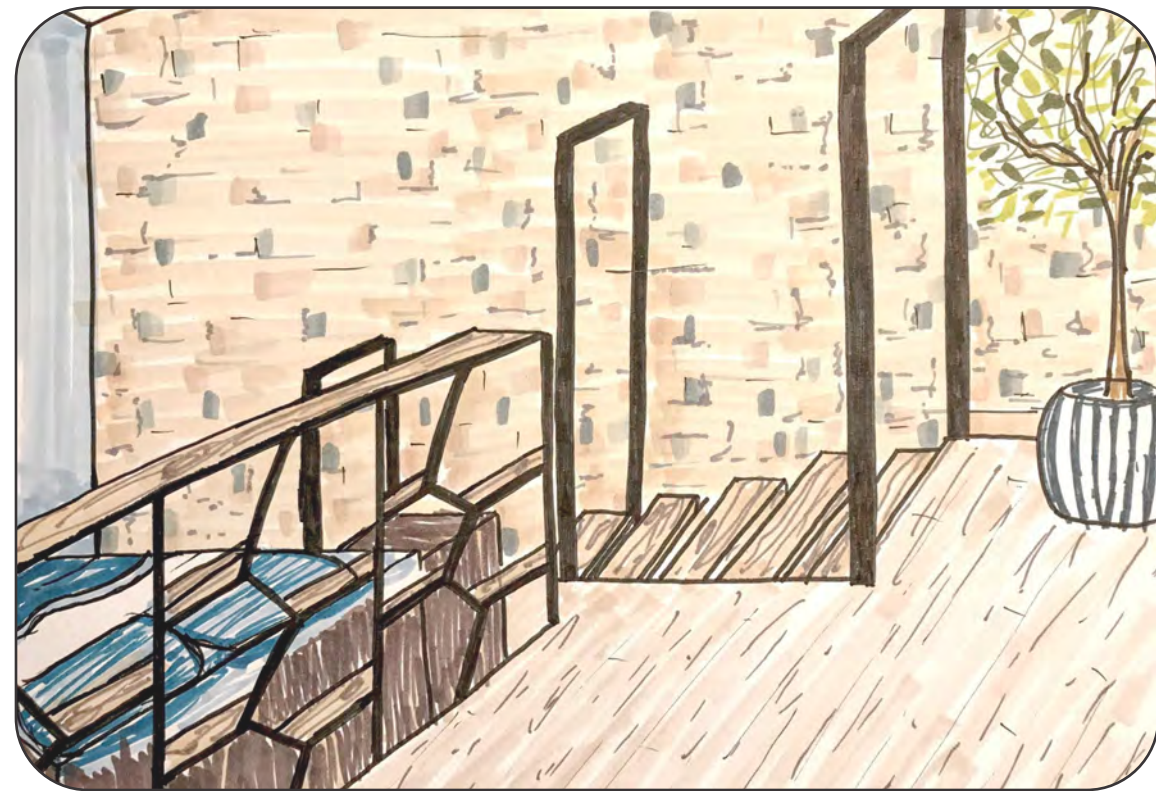
Student Lounge and Learning Stairs 10



Student Bedroom E

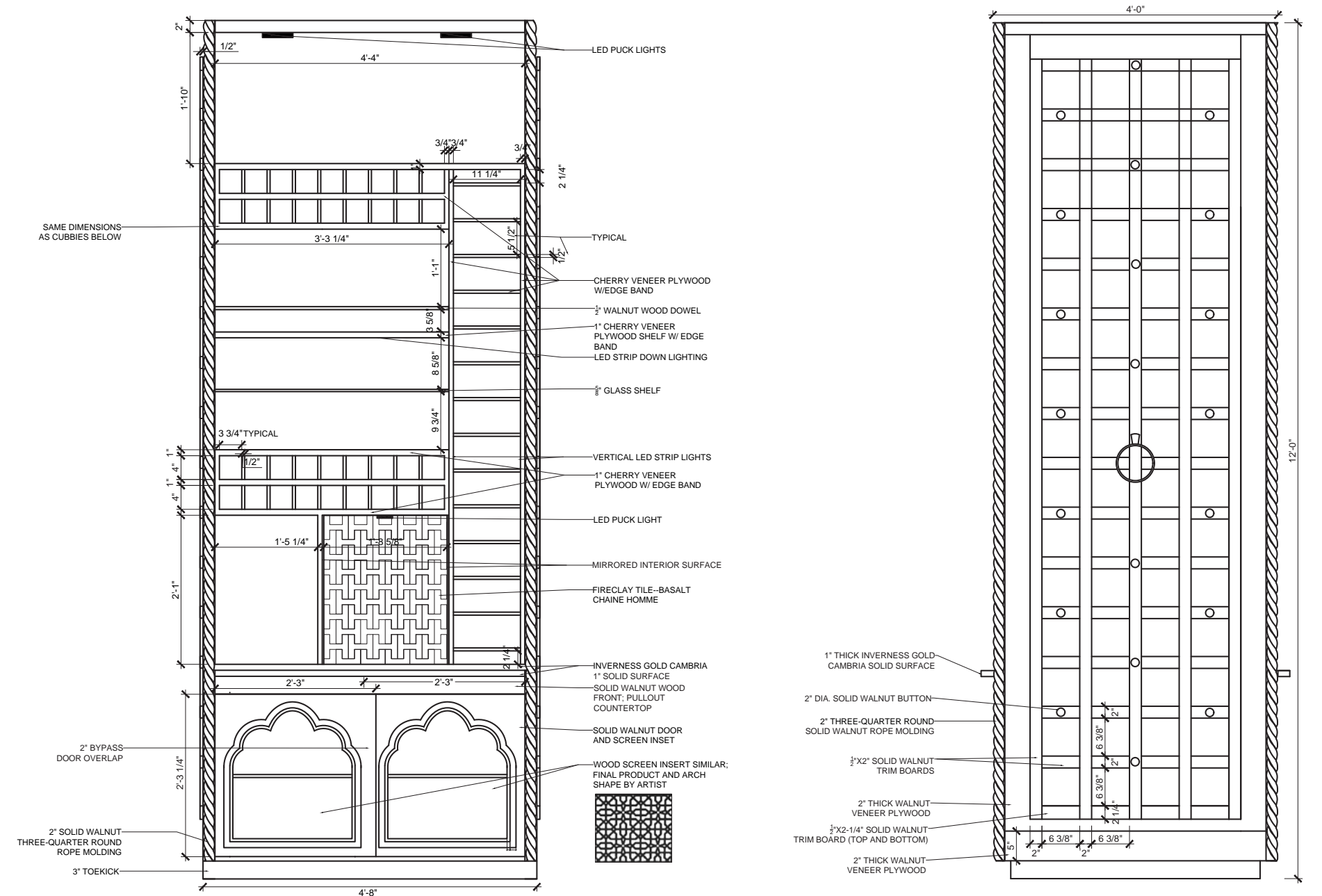


Second Floor Furniture and Finishes



Hand Rendering

Detail



Modern Spanish Wine Cabinet designed in partnership with Marissa Brittain; my technical drawings



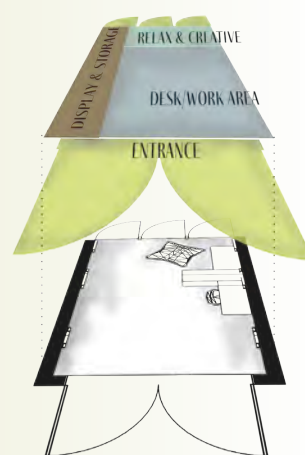
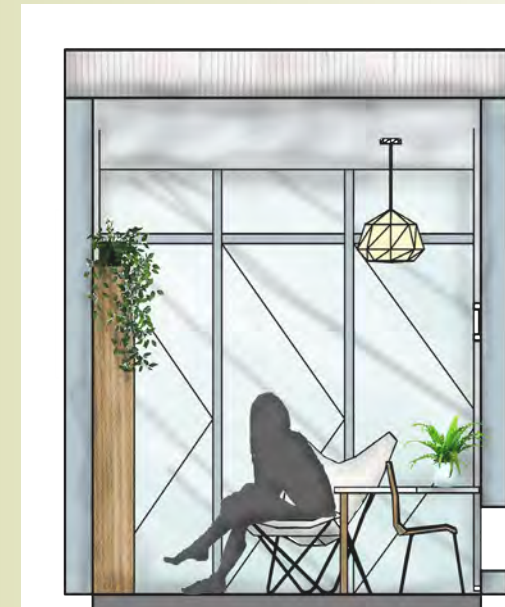
Natural Neutrals

Lydia Kroese
IDSV2220

This bathroom palette is inspired by the beauty and warmth of natural materials, kept soothing through use of neutral tones. It features a mosaic tile pattern composed of gray and white marble, teak wood, and a warm creamy marble-patterned floor tile.



*sanctuary
studio*



elevations

exploded floor plan

PORTFOLIO

LYDIA KROESE
krolydp@dunwoody.edu
Minneapolis, MN